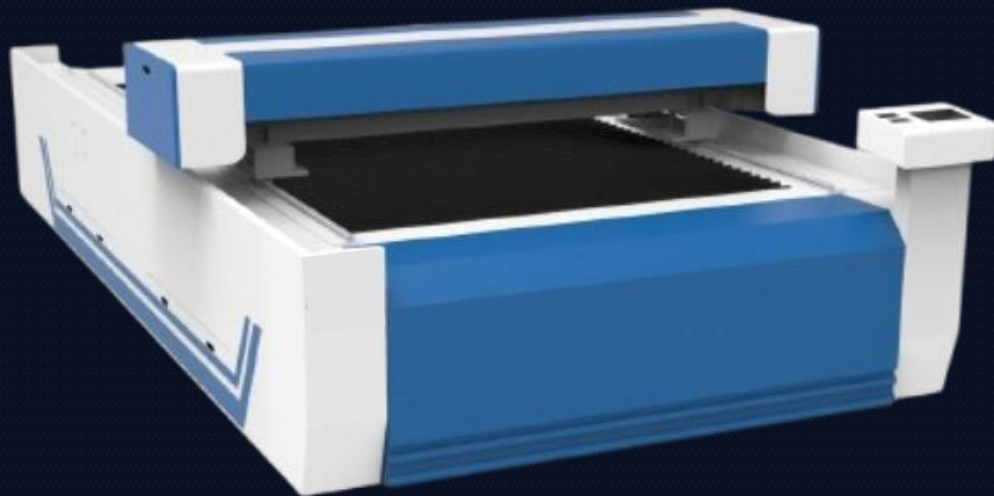


DG 1325

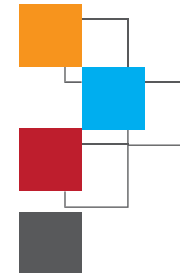
Laser 300W With Camera



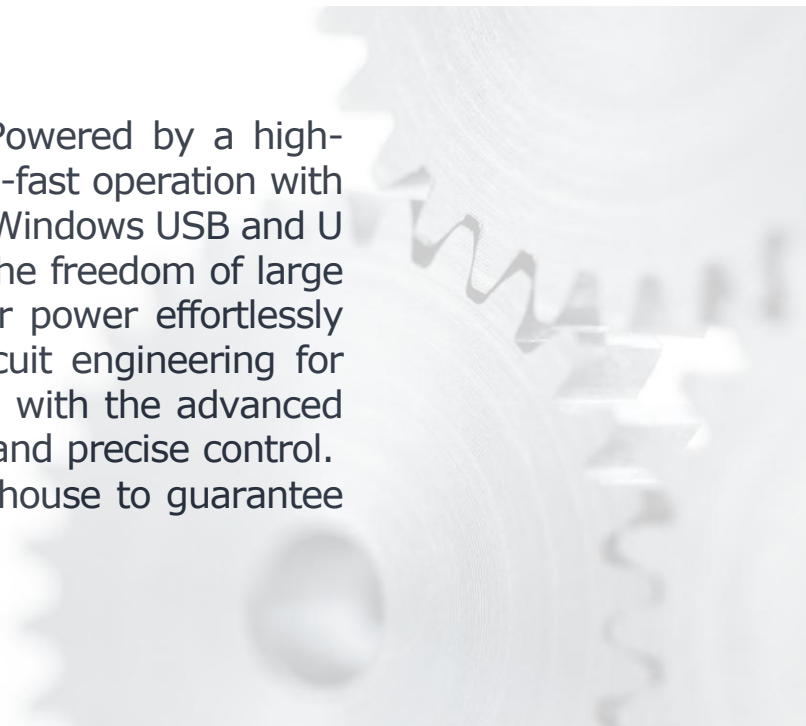
Experience the New Future of DG Laser series

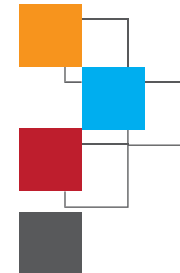


>>> Machine Advantages



Experience Precision and Performance Like Never Before Powered by a high-speed 64DSP processor, our laser system ensures lightning-fast operation with unmatched stability. Featuring convenient support for both Windows USB and U disk ports, transferring files has never been easier. Enjoy the freedom of large offline storage for uninterrupted workflows. Fine-tune laser power effortlessly with our intuitive control design, backed by exquisite circuit engineering for long-lasting reliability. The vibrant true color screen paired with the advanced AWC708C control system offers seamless user interaction and precise control. What sets us apart? Our laser tubes are manufactured in-house to guarantee premium quality and consistent performance you can trust.





>>> SPECIFICATIONS

Working area (mm)

1300*2500

Cutting speed

0-18000mm/min according on materials

Cutting Depth

Up to 30mm according on materials

Laser style

CO2

Engraving speed

0-64000mm/min

Driving way

Inovance Electric Servo motor

Laser power

300w

Resetting positioning accuracy

0.01mm

Air pump

500w included

Power Requirements

220V 60Hz

Chiller

CW6000 included

Operating temperature

0-45°C.

Power Supply and ,550w BLOWER included





>>> ACRYLIC Cutting Details

Thickness

1 mm

3 mm

5 mm

8 mm

10 mm

12 mm

15 mm

20 mm

30 mm

Speed (mm/s)

60 - 70

50 - 60

35 - 40

17 - 23

12 - 17

10 - 14

6 - 8

2.5 - 4

1.4 - 1.8

Power (%)

35 - 40

50 - 60

60 - 65

60 - 65

60 - 65

65 - 70

65 - 70

65 - 70

65 - 70



>>> DIGITAL GRAPHICS



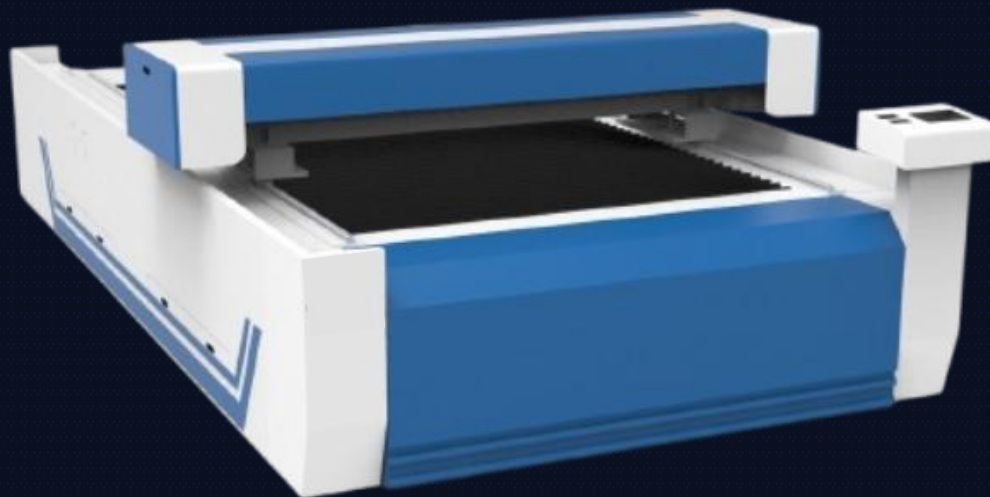
Innovative Printing Solutions

www.dgi-me.com

www.dgi-ksa.com

DG 1325

Laser 300W With Camera



Experience the New Future of DG Laser series

